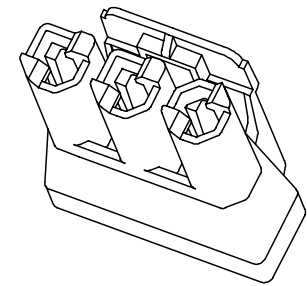
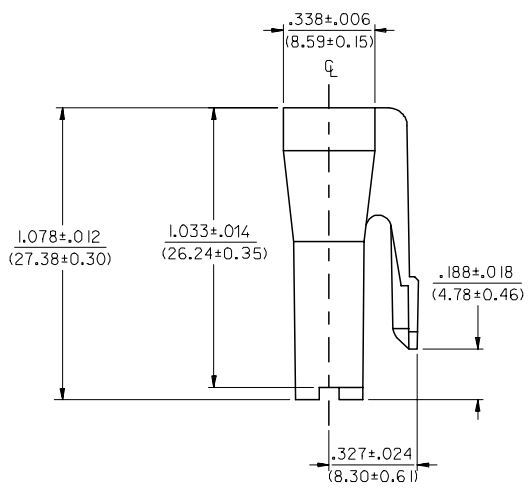
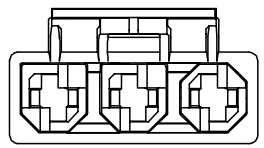
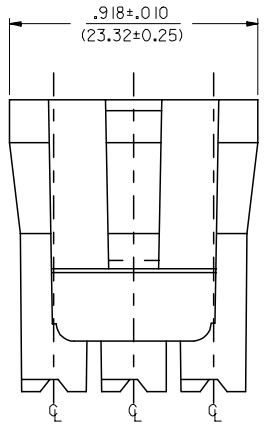
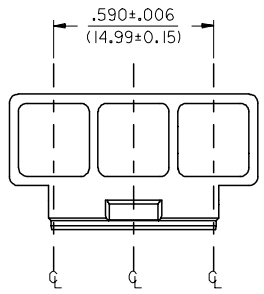


13 12 11 10 9 8 7 6 5 4 3 2 1

	MATERIAL NUMBER	MATERIAL TYPE	COLOR
X	43335-1013	A	NATURAL (TRANSLUCENT WHITE)
	43335-3013	A	RED
	43335-2013	B	BLACK

X = NOT RELEASED TO PRODUCTION



NOTES:

- MATERIAL: A: NYLON, PA66, UL94V-2, COLOR: SEE CHART
B: UL94V-0, PA6 NYLON, IEC 60335-1, 4TH EDITION
GLOW WIRE CAPABLE.
- FINISH: NONE
- PRODUCT SPECIFICATION: PSX-43335-9999.
- PACKAGING SPECIFICATION: PK-43335-001.
- THIS CONNECTOR HOUSING FOR USE WITH 43375-**** TERMINALS.
- SEE SDES-43335-9003 FOR REQUIREMENTS FOR MATING INTERFACE.
- PARTS CONFORM TO CLASS 'B' REQUIREMENTS OF COSMETIC SPECIFICATION
PS-45499-002 EXCEPT MATERIAL OPTION 'B' MEETS CLASS 'C' REQUIREMENTS
FOR SINK AND DISCOLORATION.

ADD MAT'L & P/N EC NO: UCP2007-2366 DRW: AELHAG 2007/05/25 CHKD: LSHMIDT 2007/06/01 APPR: FSM TH 2007/06/04 REVISIONS	QUALITY SYMBOLS	GENERAL TOLERANCES (UNLESS SPECIFIED)	DIMENSION STYLE	SCALE	DESIGN UNITS	THIRD ANGLE PROJECTION															
	$\nabla=0$ $\nabla=0$	<table border="1"> <thead> <tr> <th></th> <th>mm</th> <th>INCH</th> </tr> </thead> <tbody> <tr> <td>4 PLACES</td> <td>± ---</td> <td>± ---</td> </tr> <tr> <td>3 PLACES</td> <td>± ---</td> <td>± ---</td> </tr> <tr> <td>2 PLACES</td> <td>± ---</td> <td>± ---</td> </tr> <tr> <td>1 PLACE</td> <td>± ---</td> <td>± ---</td> </tr> </tbody> </table>		mm	INCH	4 PLACES	± ---	± ---	3 PLACES	± ---	± ---	2 PLACES	± ---	± ---	1 PLACE	± ---	± ---	IN/MM DRAWN BY: BW DATE: 10/30/02 CHECKED BY: BW DATE: 10/30/02 APPROVED BY: SF DATE: 10/30/02	3:1	INCH	
		mm	INCH																		
	4 PLACES	± ---	± ---																		
3 PLACES	± ---	± ---																			
2 PLACES	± ---	± ---																			
1 PLACE	± ---	± ---																			
DESCRIPTION	ANGULAR ±1/2° DRAFT WHERE APPLICABLE MUST REMAIN WITHIN DIMENSIONS	MATERIAL NO. SEE CHART SIZE: C	TITLE 3 CKT RECEPTACLE HOUSING .125X.020 FLAT BLADE SYSTEM W/TPA MOLEX INCORPORATED DOCUMENT NO. SD-43335-x013	SHEET NO. 1 OF 1																	

12 11 10 9 8 7 6 5 4 3 2 1